



MIPEX 2024 results

# Germany

---

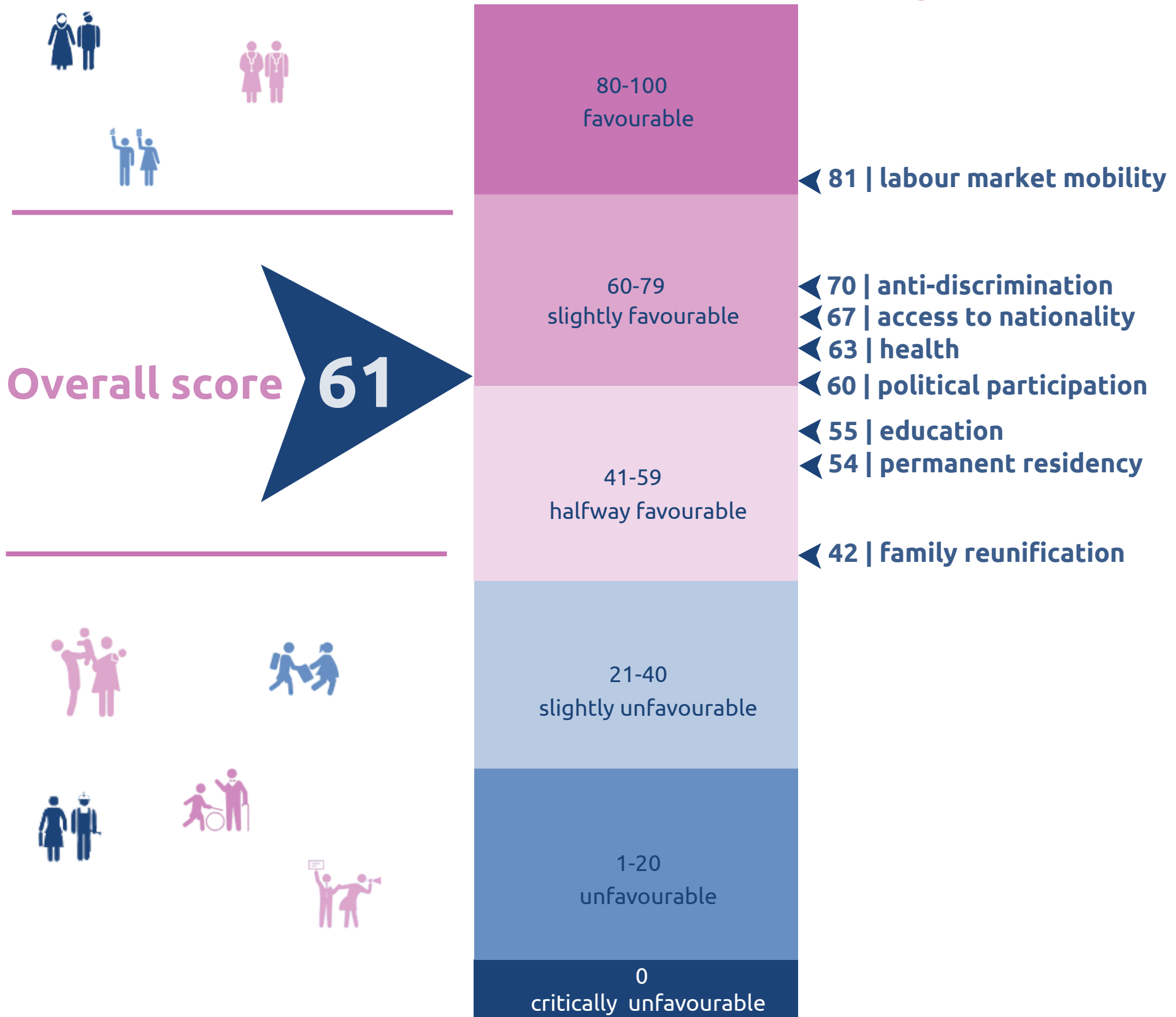
summary



# Score sheet



## Policy scores



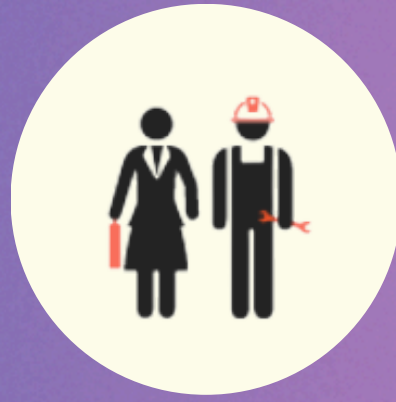




## **Changes in Policy:**

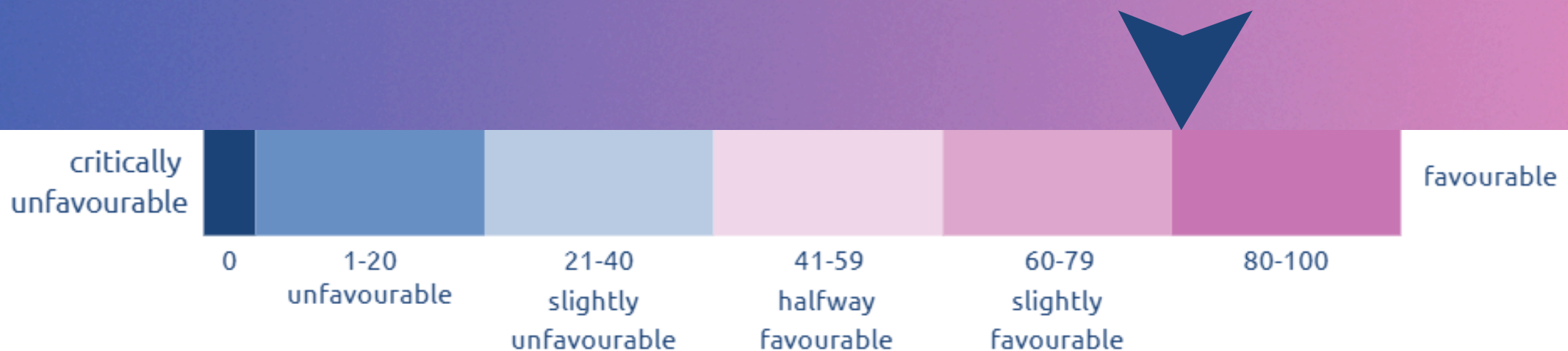
Germany improved integration policies, especially in labour market and citizenship. A 2024 citizenship law reduced residency requirements and allowed dual citizenship, boosting MIPEX score by 3 points. Other reforms remained targeted to specific groups, limiting broader impact.





## Labour Market Mobility | 81

Germany is a leader in this area. New laws support qualified worker immigration, expand Blue Card access, and ease entry for self-employment. Barriers remain for some temporary residents and public sector access.

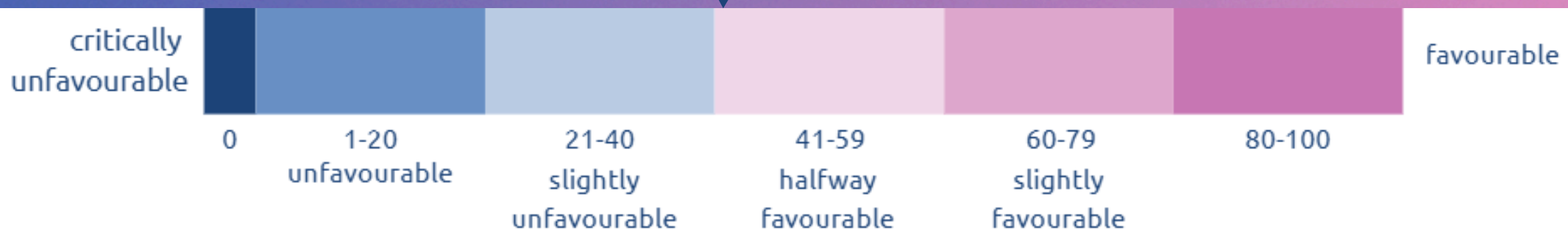






## Family Reunification | 42

Restrictive rules make this one of Germany's weakest areas. High language, financial, and legal hurdles exist, especially for older children and spouses of migrant workers.

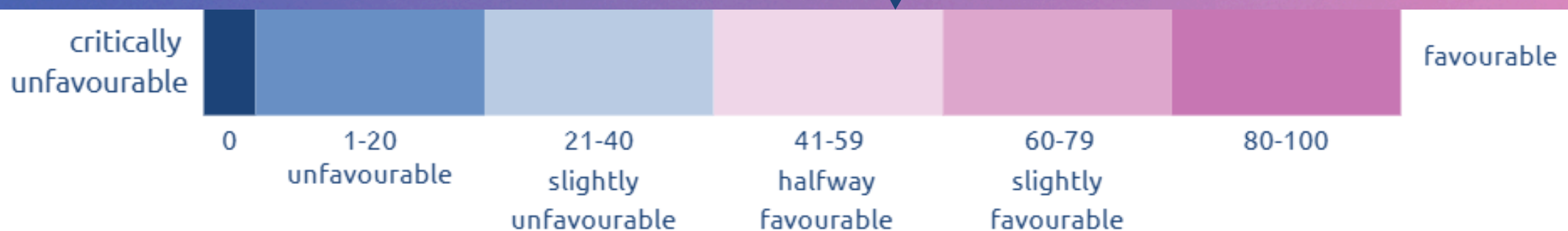






## Education | 55

Policies improved slightly post-2015. Programmes support language learning and higher education access, but tailored support and guaranteed equal access remain inconsistent.

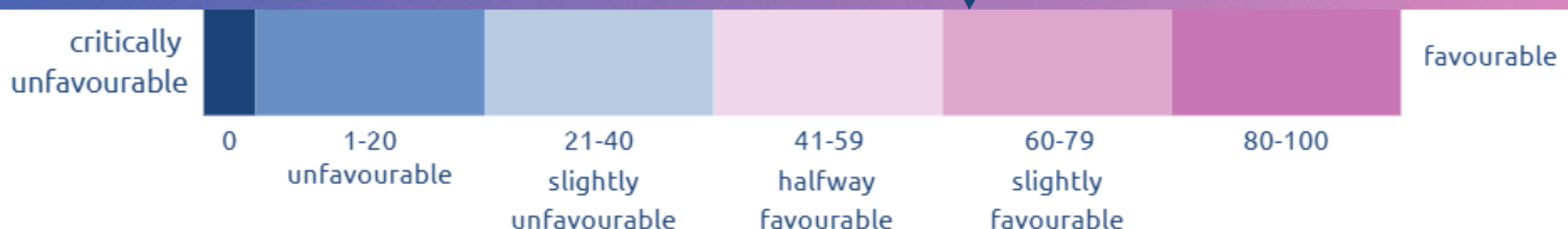






## Health | 63

Healthcare access improved for some, but undocumented migrants still face barriers. Fear of deportation deters care-seeking. Support is growing for migrant healthcare workers and health-related research.

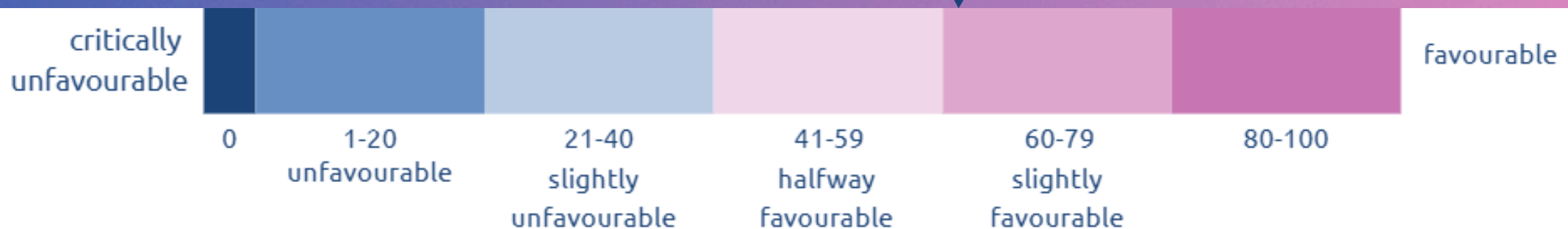






## Political Participation | 60

Little recent change. While civil society engagement exists, Germany lacks broad immigrant political inclusion like local voting rights and sustained migrant-led structures.

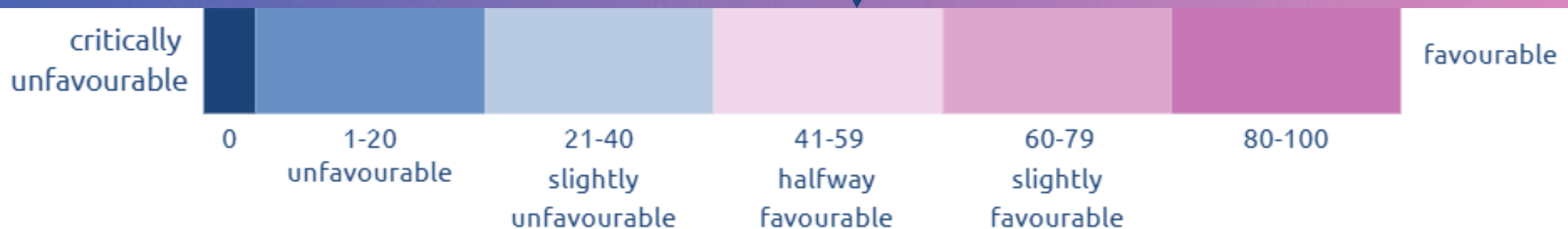






## Permanent Residence | 54

Access to long-term residence is possible but demanding. New rules support tolerated migrants and qualified workers. Easier pathways exist for Blue Card holders and graduates.



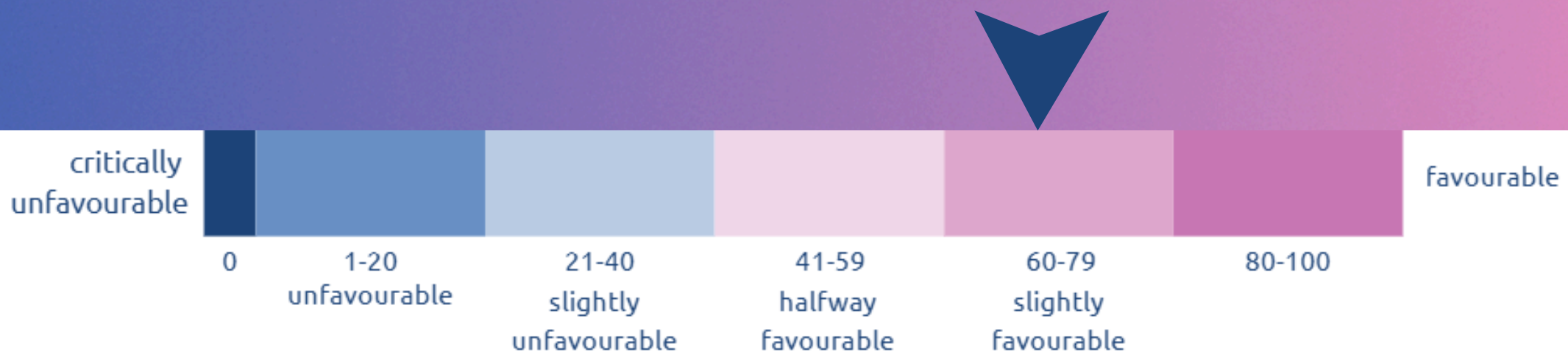




## Access to Nationality | 67

The 2024 reform allows dual citizenship, cuts residency to 5 years, or 3 years with significant integration achievements.

Despite progress, strict income and language conditions remain.

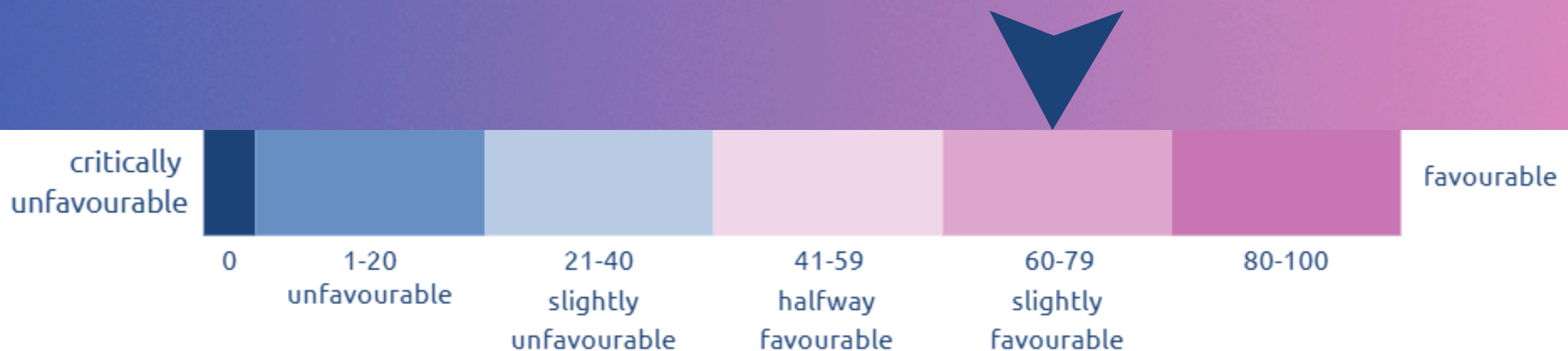






## Anti-discrimination | 70

Germany has moderate protections.  
Recent reforms expand coverage, but  
weak enforcement and limited equality  
body powers hinder progress.  
Awareness and reporting remain low.







## Conclusions & Recommendations:

Germany's policies are slightly favourable (61/100), offering better integration than some neighbours but lacking comprehensive, long-term solutions - especially in family reunification, residence, and anti-discrimination. It can learn from Nordic and Benelux countries for broader reform.





# MIGRANT INTEGRATION POLICY INDEX

---



[www.mipex.eu](http://www.mipex.eu)

[www.migpolgroup.com](http://www.migpolgroup.com)

@migpolgroup

#MIPEx